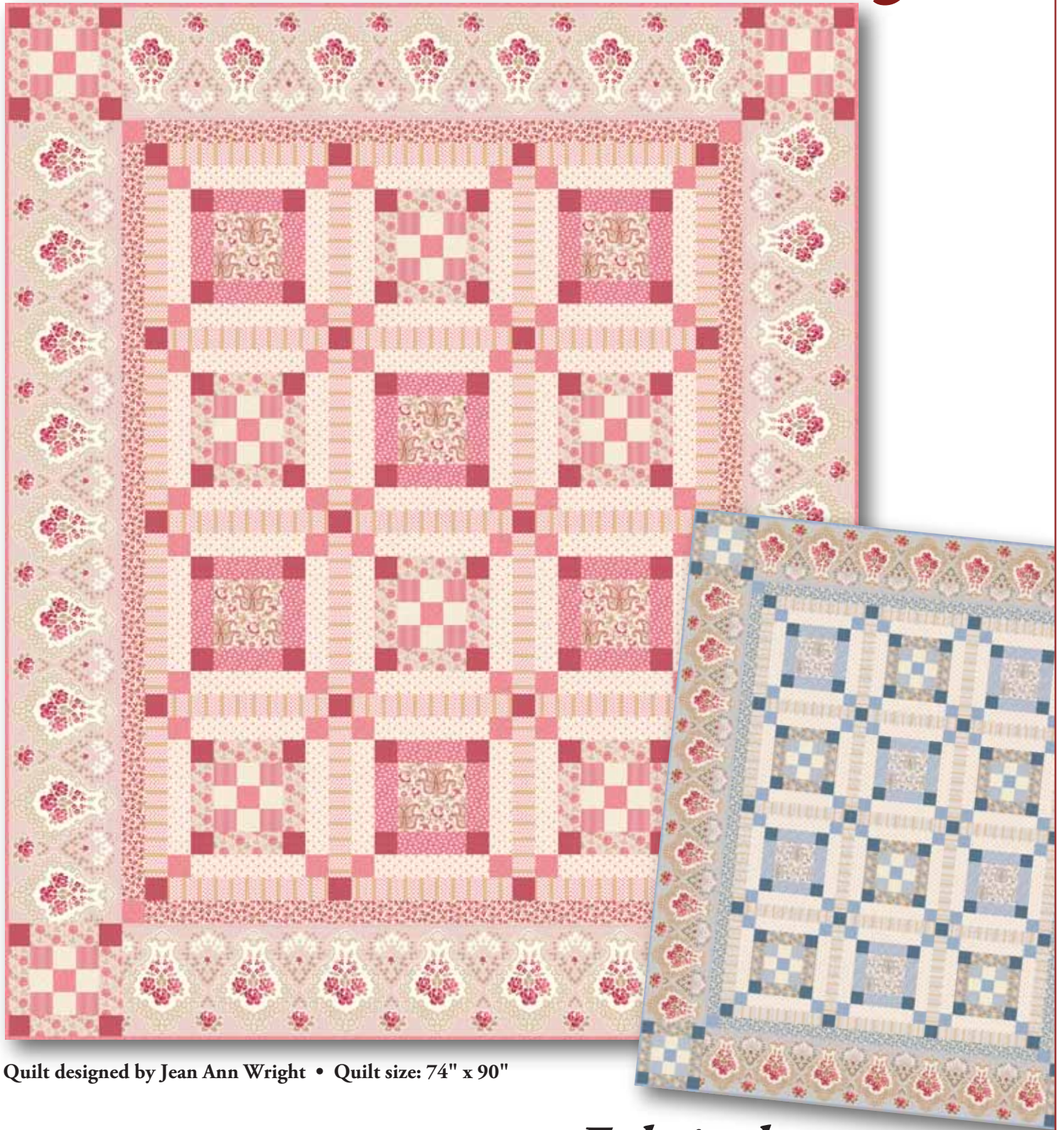


Chateau Chambrey



Quilt designed by Jean Ann Wright • Quilt size: 74" x 90"



makower uk®

1384 Broadway
New York, NY 10018
(800) 223-5678
www.andoverfabrics.com

Fabrics by
Renée Nanneman

Chateau Chambray

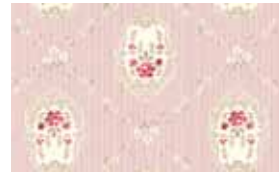
Fabrics by Renée Nanneman

Fabrics shown are 10% of actual size.

Fabrics used in quilt pattern are indicated in red.



5912-R 2 1/8 yds



5913-R 5 1/2 yds (backing)



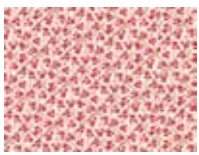
5914-R 1/4 yd



5915-R 5/8 yd



5915-RN



5916-R 1/2 yd



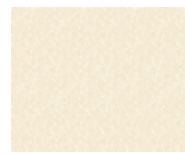
5917-R 3/8 yd



5918-R 1 1/4 yds



5919-R 3/8 yd



5919-RL 3/8 yd



5920-R 1 yd
(includes binding)



5921-R 1 1/4 yds



5922-R 5/8 yd



5922-RL



3943-E



4261-R



4264-E



4265-R



4267-LN



5912-B



5913-B



5914-B



5915-B



5916-B



5917-B



5918-B



5919-B



5920-B



5921-B



5921-BN



5922-BN



5922-B



3942-B



4064-N2



4066-B



4068-B



4263-N



makower uk[®]

1384 Broadway
New York, NY 10018
(800) 223-5678

www.andoverfabrics.com

Bolts needed to cut project kits									
Red	Blue	10 kits	20 kits	30 kits	Red	Blue	10 kits	20 kits	30 kits
5912-R	5912-B	2	3	5	5919-RL	5919-RL	1	1	1
5914-R	5914-B	1	1	1	5920R	5920-B	1	2	2
5915-R	5915-B	1	1	2	5921-R	5921-B	1	2	3
5916-R	5916-B	1	1	1	5922-R	5922-B	1	1	2
5917-R	5917-B	1	1	1	Backing Fabric				
5918-R	5918-B	1	2	3	*5913-R	5913-B	4	8	12
5919-R	5919-B	1	1	1	<i>Yardage for backing (5 1/2 yards per kit)</i>				